

Strimech Engineering Ltd
Longmore Avenue
Bentley, Walsall
WS2 0BW

www.strimech.co.uk



01922 649700



STRIMECH

Attachments

STRIMECH

Attachments



Specialist Attachments for:

Agriculture • Recycling & Waste Handling • Plant & Construction • Industrial • Forestry

PRODUCT CATALOGUE

An Introduction to Strimech

Strimech Engineering Ltd was started in January 1977 by Ron Cooper and John Blades.

The name Strimech was derived from the term Strip Mechanical Engineers.

The company started in a small workshop in Wilkes Street, Willenhall in the West Midlands, with a workforce of three alongside the two founders.

Six months later the company moved to a much larger site at Bilston Lane where they remained for the next three years.

Strimech was engaged in the manufacture of machinery used in the strip process of industrial machines such as roll formers, shears, presses and uncoilers and the onsite installation of steel process equipment.

When construction began in 1980 on the Black Country Route, the bypass between Walsall and

Wolverhampton, Strimech moved again to its present site on Longmore Avenue in Walsall.

It was around this time that Strimech became involved in producing attachments for telescopic handlers, which were then still quite new to farming. A range of attachments were designed for the few machines that were on the market.

Strimech also continued manufacturing steel process equipment, but the UK steel industry was declining by this point in the 1980s. The decision was made to concentrate on the attachment side of the business, to meet increasing demand and maximise growth.

By the mid-nineties, Strimech was established as a significant supplier in the farming industry providing OEMs and dealers throughout the UK with attachments for all makes of telehandlers.

 **STRIMECH**
Attachments



Contents

PRO'AG

Pro-Ag Bucket (BKT10, 15, 17 & 20 Range).....	6
Pro-Ag Bucket (BKT25, 27, & 30 Range).....	6
Pro-Ag High-Capacity Grain Bucket.....	7
Pro-Ag Hopper Bucket.....	8
Pro-Ag High Tip Bucket.....	9
Pro-Ag Multi-Bucket Grapple.....	10
Pro-Ag Bucket & Grab.....	11
Pro-Ag Bucket Brush.....	11
Pro-Ag Root Crop Bucket.....	12
Pro-Ag Potato Scoop.....	12
Pro-Ag Auger Bucket.....	13
Pro-Ag 4-in-1 Multi-Purpose Bucket.....	13
Pro-Ag Tractor Loader Fork Range.....	14
Pro-Ag Muck Fork Range.....	15
Pro-Ag Contractor Fork Range.....	15
Pro-Ag Log Fork Range.....	16
Pro-Ag Heavy Duty Log Fork.....	17
Pro-Ag High-Capacity Grass Fork.....	18

PRO'BUILD

Pro-Build Bagezee.....	34
Pro-Build Construction GP Bucket.....	35
Pro-Build Heavy Duty Rehandling Bucket.....	36
Pro-Build Pole Planter.....	37
Pro-Build Snow Plough.....	38
Pro-Build Pipe Clamp.....	38
Pro-Build Hydraulic Fork Positioner.....	39
Pro-Build Work Platforms.....	40
Pro-Build Tipping Skip.....	41
Pro-Build Auto Locking Tipping Skip.....	41
Pro-Build Fence Master.....	42
Pro-Build Barrier Master.....	42
Pro-Build Frame Lift 750.....	43

Pro-Ag Folding Fork.....	18
Pro-Ag Buckrake.....	19
Pro-Ag Tractor Loader Grab Range.....	20
Pro-Ag Power Grab Range.....	21
Pro-Ag Muck Fork & Grab Range.....	22
Pro-Ag Contractor Fork & Grab Range.....	23
Pro-Ag Shear Grab.....	24
Pro-Ag Shear Bucket.....	25
Pro-Ag Box Tipper.....	26
Pro-Ag Fixed Bag Lifter.....	27
Pro-Ag Hydraulic Bag Lifter.....	27
Pro-Ag Grain Pusher.....	28
Pro-Ag Bale Handling.....	29
Pro-Ag Square Wrapped Bale Handler.....	30
Pro-Ag Universal Bale Grab.....	30
Pro-Ag Bale Handling.....	31
Pro-Ag Log Grabs.....	32

PRO'WASTE

Pro-Waste Wastemaster Fork.....	44
Pro-Waste Wastemaster Fork & Grab Range.....	45
Pro-Waste Wastemaster Bucket and Claw.....	46
Pro-Waste Rehandling Bucket and Claw.....	47
Pro-Waste Rehandling Bucket.....	48
Pro-Waste Heavy Duty GP Shovels.....	49
Pro-Waste Heavy Duty High Tip Shovels.....	50
Large Multi-Bucket Bucket Grapple.....	51
Pro-Waste Skip Hook.....	52
Pro-Waste Knife Arms Clamp.....	53

PRO'AG

The largest and most respected range of attachments designed specifically for the farming community, including buckets, forks, grabs and spikes.



Pro-Ag Bucket

Boron 500 leading edge • Corner Fills and side stiffeners offering greater strength • Rolled shell giving greater versatility for dump & roll back
Wear plates underneath the bucket for strength • Bolt on Wear Edge available as an optional extra.



Model	Capacity m ³ (ft ³)	Overall Width mm (ft)	Height mm (ft)	Depth mm (ft)	Weight kg (lb)
BKT10-56	0.6 (21)	1680 (5'6")	830 (2'9")	1040 (3'5")	320 (704)
BKT10-60	0.7 (25)	1830 (6'0")	830 (2'9")	1040 (3'5")	340 (748)
BKT10-66	0.8 (28)	1980 (6'6")	830 (2'9")	1040 (3'5")	360 (792)
BKT10-70	0.9 (32)	2130 (7'0")	830 (2'9")	1040 (3'5")	380 (836)
BKT10-76	1.0 (35)	2290 (7'6")	830 (2'9")	1040 (3'5")	400 (880)
BKT10-80	1.1 (39)	2440 (8'0")	830 (2'9")	1040 (3'5")	420 (924)
BKT15-56	1.1 (39)	1680 (5'6")	990 (3'3")	1250 (4'1")	390 (858)
BKT15-60	1.2 (42)	1830 (6'0")	990 (3'3")	1250 (4'1")	410 (802)
BKT15-66	1.3 (46)	1980 (6'6")	990 (3'3")	1250 (4'1")	430 (946)
BKT15-70	1.4 (49)	2130 (7'0")	990 (3'3")	1250 (4'1")	450 (990)
BKT15-76	1.5 (53)	2290 (7'6")	990 (3'3")	1250 (4'1")	470 (1034)
BKT15-80	1.6 (57)	2440 (8'0")	990 (3'3")	1250 (4'1")	490 (1078)
BKT15-86	1.7 (60)	2590 (8'6")	990 (3'3")	1250 (4'1")	510 (1122)
BKT17-60	1.4 (49)	1830 (6'0")	1070 (3'6")	1360 (4'6")	440 (968)
BKT17-66	1.5 (53)	1980 (6'6")	1070 (3'6")	1360 (4'6")	460 (1012)
BKT17-70	1.6 (57)	2130 (7'0")	1070 (3'6")	1360 (4'6")	480 (1056)
BKT17-76	1.7 (60)	2290 (7'6")	1070 (3'6")	1360 (4'6")	500 (1100)
BKT17-80	1.8 (64)	2440 (8'0")	1070 (3'6")	1360 (4'6")	520 (1144)
BKT17-86	1.9 (67)	2590 (8'6")	1070 (3'6")	1360 (4'6")	540 (1188)
BKT20-60	1.7 (60)	1830 (6'0")	1140 (3'9")	1450 (4'9")	475 (1045)
BKT20-66	1.8 (64)	1980 (6'6")	1140 (3'9")	1450 (4'9")	495 (1089)
BKT20-70	1.9 (67)	2130 (7'0")	1140 (3'9")	1450 (4'9")	515 (1133)

Model	Capacity m ³ (ft ³)	Overall Width mm (ft)	Height mm (ft)	Depth mm (ft)	Weight kg (lb)
BKT20-76	2.0 (71)	2290 (7'6")	1140 (3'9")	1450 (4'9")	535 (1177)
BKT20-80	2.1 (74)	2440 (8'0")	1140 (3'9")	1450 (4'9")	555 (1221)
BKT20-86	2.2 (77)	2590 (8'6")	1140 (3'9")	1450 (4'9")	575 (1265)
BKT25-60	1.9 (67)	1830 (6'0")	1141 (3'9")	1590 (5'3")	530 (1166)
BKT25-66	2.1 (74)	1980 (6'6")	1220 (4'0")	1590 (5'3")	555 (1221)
BKT25-70	2.2 (77)	2130 (7'0")	1220 (4'0")	1590 (5'3")	580 (1276)
BKT25-76	2.3 (81)	2290 (7'6")	1220 (4'0")	1590 (5'3")	605 (1331)
BKT25-80	2.5 (88)	2440 (8'0")	1220 (4'0")	1590 (5'3")	630 (1386)
BKT25-86	2.6 (92)	2590 (8'6")	1220 (4'0")	1590 (5'3")	655 (1441)
BKT27-60	2.0 (71)	1830 (6'0")	1280 (4'2")	1680 (5'6")	590 (1298)
BKT27-66	2.2 (77)	1980 (6'6")	1280 (4'2")	1680 (5'6")	615 (1353)
BKT27-70	2.4 (85)	2130 (7'0")	1280 (4'2")	1680 (5'6")	640 (1408)
BKT27-76	2.6 (92)	2290 (7'6")	1280 (4'2")	1680 (5'6")	665 (1463)
BKT27-80	2.7 (95)	2440 (8'0")	1280 (4'2")	1680 (5'6")	690 (1518)
BKT27-86	3.0 (106)	2590 (8'6")	1280 (4'2")	1680 (5'6")	715 (1573)
BKT30-60	2.3 (81)	1830 (6'0")	1340 (4'5")	1740 (5'9")	620 (1364)
BKT30-66	2.5 (88)	1980 (6'6")	1340 (4'5")	1740 (5'9")	650 (1430)
BKT30-70	2.7 (95)	2130 (7'0")	1340 (4'5")	1740 (5'9")	680 (1496)
BKT30-76	2.9 (102)	2290 (7'6")	1340 (4'5")	1740 (5'9")	710 (1562)
BKT30-80	3.0 (106)	2440 (8'0")	1340 (4'5")	1740 (5'9")	740 (1628)
BKT30-86	3.3 (116)	2590 (8'6")	1340 (4'5")	1740 (5'9")	770 (1694)

PRO-AG RANGE

Pro-Ag High-Capacity Grain Buckets

- BKT40 range has straight side plates
- BKT50 range has domed side plates
- Bolt on HB500 toe plate (as standard)
- 20mm thick base wear plates
- 12mm thick internal stiffener ribs at fixing centres and shell base pads to increase structural rigidity
- Heavy duty 8mm thick corner fills
- Heavy duty machine bracket plates
- Imex shell (optional)

Model	Capacity m ³ (ft ³)	Overall Width mm (ft)	Height mm (ft)	Depth mm (ft)	Weight kg (lb)
BKT40-80	3.6 (127)	2480 (8')	1583 (5'2")	2095 (6'10")	1020 (2248)
BKT40-86	3.8 (134)	2600 (8'6")	1583 (5'2")	2095 (6'10")	1102 (2429)
BKT40-90	4.1 (145)	2800 (9')	1583 (5'2")	2095 (6'10")	1150 (2535)
BKT40-10	4.4 (155)	3040 (10')	1583 (5'2")	2095 (6'10")	1209 (2665)
BKT50-80	3.9 (138)	2480 (8')	1583 (5'2")	2095 (6'10")	1100 (2425)
BKT50-86	4.1 (145)	2600 (8'6")	1583 (5'2")	2095 (6'10")	1180 (2601)
BKT50-90	4.4 (155)	2800 (9')	1583 (5'2")	2095 (6'10")	1240 (2733)
BKT50-10	4.8 (169)	3040 (10')	1583 (5'2")	2095 (6'10")	1320 (2910)

BKT40 Range



BKT50 Range



PRO-AG RANGE

Pro-Ag Hopper Bucket

- Bulk grain handling
- Bulk bag filling facility
- In the field machine filling ability e.g. Seed Drills & Fertilizer Spreaders
- Excellent controllability of discharge flow
- Fully enclosed workings including the hydraulic ram giving easy access for maintenance and service
- Industry standard 8" discharge chute
- Fully self-emptying hopper with no trap points
- Clear open & close indicator for the operator to control the flow from the machine seat position
- Boron 500 weld in toe plate
- Bulk Bag Cutter Blade
- Optional extras include, Bolt on Wear Edge (Boron 500), All Weather Cover, Self-Standing Stand

Model	Capacity m ³ (ft ³)	Overall Width mm (ft)	Height mm (ft)	Depth mm (ft)	Weight kg (lb)
BKT27-80HB	1.5 (53)	2440 (8'0")	1280 (4'2")	1680 (5'5")	915 (2017)
BKT27-80HBC*	1.5 (53)	2440 (8'0")	1280 (4'2")	1680 (5'5")	916 (2017)
BKT27-80HBCD**	1.5 (53)	2440 (8'0")	1280 (4'2")	1680 (5'5")	917 (2017)

* = All Weather Cover Inc ** = All Weather Cover & Bolt-on Toe Plate



PRO-AG RANGE

Pro-Ag High Tip Bucket

- 5 Models in the range from 1.35m³ to 3.0m³
- Suitable for Agricultural applications
- 5mm Shell
- Machine lift capacity up to 3 tonnes
- Twin heavy duty hydraulic rams
- Operator can clean up against walls
- Increases discharge height and forward
- Spill Guard shown as optional extra
- Bolt-on wear plate fitted as optional extra
- Spare Parts backup

Model	Capacity m ³ (ft ³)	Overall Width mm (ft)
PAHT15-66	1.35 (478)	1980 (6' 6")
PAHT15-76	1.5 (53)	2290 (7' 6")
PAHT20-76	2.0 (71)	2290 (7' 6")
PAHT20-80	2.1 (74)	2440 (8'0")
PAHT30-80	3.0 (106)	2440 (8'0")



PRO-AG RANGE

Pro-Ag Multi-Bucket Grapple

- 18 Models in the range
- Overall widths from 6ft to 8ft6"
- Wide opening top grab
- Removable side plates
- Choice of KV, Hardox or Fabricated grab
- Bolt on Toe Plate fitted as standard

Model	Closed Capacity m ³ (ft ³)	Overall Width mm (ft)	Top Tine Qty	Tine Type	Weight kg (lb)
MGVCP60	0.9 (32)	1830 (6'0")	9	Profile Claw	572 (1261)
MGVCP66	1.0 (35)	1980 (6'6")	9	Profile Claw	593 (1307)
MGVCP70	1.1 (39)	2130 (7'0")	9	Profile Claw	614 (1353)
MGVCP76	1.2 (42)	2290 (7'6")	9	Profile Claw	635 (1400)
MGVCP80	1.3 (46)	2440 (8'0")	9	Profile Claw	656 (1446)
MGVCP86	1.4 (49)	2590 (8'6")	9	Profile Claw	677 (1492)
MGVC60	1.2 (42)	1830 (6'0")	5	KV Claw	566 (1247)
MGVC66	1.35 (48)	1980 (6'6")	5	KV Claw	590 (1300)
MGVC70	1.45 (51)	2130 (7'0")	5	KV Claw	614 (1353)
MGVC76	1.56 (55)	2290 (7'6")	5	KV Claw	638 (1450)
MGVC80	1.66 (58)	2440 (8'0")	5	KV Claw	662 (1459)
MGVC86	1.77 (63)	2590 (8'6")	5	KV Claw	686 (1512)
MGVCX60	1.2 (42)	1830 (6'0")	5	Hardox Claw	585 (1290)
MGVCX66	1.35 (48)	1980 (6'6")	5	Hardox Claw	609 (1342)
MGVCX70	1.45 (51)	2130 (7'0")	5	Hardox Claw	633 (1395)
MGVCX76	1.56 (55)	2290 (7'6")	5	Hardox Claw	657 (1448)
MGVCX80	1.66 (58)	2440 (8'0")	5	Hardox Claw	681 (1501)
MGVCX86	1.77 (63)	2590 (8'6")	5	Hardox Claw	705 (1554)

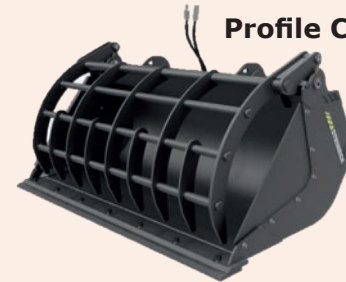
KV Claw



Hardox Claw



Profile Claw



Pro-Ag Bucket & Grab

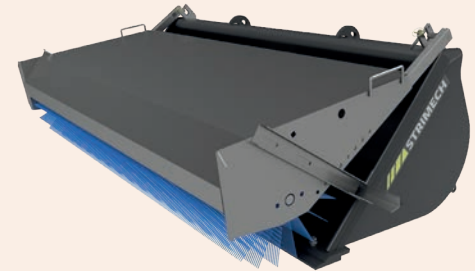
- Boron 500 leading edge
- Corner Fills and side stiffeners offering greater strength
- Rolled shell giving greater versatility for dump & roll back
- Wear plates underneath the bucket for strength
- Single or split twin claw options available
- Bolt on Wear Edge available as an optional extra

For Bucket specifications see Pro-Ag Buckets covering the models from BKT10 – BKT20 series



Pro-Ag Bucket Brush

- Compact Heavy-Duty, High-Performance Spline Drive Motor for maximum engagement
- 560mm brush diameter with Quadruple engagement brush system for maximum efficacy
- In-line hydraulic motor protection valve – Max 240 bar & 170 l/min. Fitted standard for 7'6" & 8' Brushes
- Reversible Brush rotation
- Quick hitch bucket fitment
- Free standing for storage
- Standard sizes for 6', 7', 7'6" & 8' Buckets
- Fully Galvanised body
- Brush height adjustment
- Minimum flow requirement of 38 l/min @ 69 bar
- Other sizes available on request



Model	Width (mm)	Weight (kg)
ST220/60	1798 -1980	168
ST220/70	1980 -2210	190
ST220/76	2210 -2440	210
ST220/86	2380 -2610	230

Pro-Ag Root Crop Bucket

- 4 models in the range from 1.4m³ to 2.1m³
- Machine Capacity up to 3 tonnes
- Handles root crop, beet and other feeds
- 20mm Standard bars
- 50mm standard bar spacing
- Small material could fall through the bars



Model	Capacity m ³ (ft ³)	Overall Width mm (ft)	Height mm (ft)	Depth mm (ft)	Weight kg (lb)
RCB15-70	1.38 (49)	2130 (7'0")	925 (3'0")	1100 (3'3")	420 (925)
RCB15-76	1.5 (53)	2290 (7'6")	925 (3'0")	1100 (3'3")	440 (970)
RCB20-70	1.94 (68)	2130 (7'0")	1080 (3'5")	1300 (4'3")	435 (959)
RCB20-76	2.08 (73)	2290 (7'6")	1080 (3'5")	1300 (4'3")	465 (1025)

Pro-Ag Potato Scoop

- Designed for handling potatoes
- Rounded edges for crop protection
- Boron 500 weld-in edge as standard.
- Ideal for machines up to 3 tonnes capacity
- Spill guard as an optional extra



Model	Capacity m ³ (ft ³)	Overall Width m (ft)	Height m (ft)	Depth m (ft)	Weight kg (lb)
PSC15-70	1.6 (57)	2.13 (7'0")	1.0 (3'3")	1.2 (3'9")	530 (1168)
PSC15-76	1.7 (60)	2.29 (7'6")	1.0 (3'3")	1.2 (3'9")	550 (1212)
PSC20-76	2.0 (71)	2.29 (7'6")	1.03 (3'4")	1.65 (5'4")	590 (1300)
PSC20-80	2.1 (74)	2.44 (8'0")	1.03 (3'4")	1.65 (5'4")	600 (1322)

PRO-AG RANGE

Pro-Ag Auger Bucket

- Discharges feed products
- Can be supplied left or right discharge
- Material retention flap on end of auger as standard
- Unrestricted discharge chute
- Auger runs inside wear strips mounted in discharge chute
- Not suitable for silage



Model	Capacity m ³ (ft ³)	Overall Width mm (ft)	Height mm (ft)	Depth mm (ft)	Weight kg (lb)
AB15-76	1.5 (53)	2290 (7'6")	925 (3'0")	1100 (3'7")	600 (1322)

Pro-Ag 4-in-1 Multi-Purpose Bucket

- Telehandler or loader lift capacity up to 2.5 tonnes
- Heavy duty design
- Twin hydraulic rams
- Bolt-on wear plate optional
- Digging teeth optional
- Other sizes available



Model	Capacity m ³ (ft ³)	Overall Width mm (ft)
MPB57	0.4 (14)	1730 (5'7")
MPB70	0.67 (24)	2250 (7'4")
MPB76	0.75 (27)	2310 (7'6")
MPB86	1.5 (53)	2590 (8'6")



PRO-AG RANGE

Pro-Ag Tractor Loader Fork Range

- 4ft to 7ft 6" model range
- Full Back Plate with tine visibility pockets
- Ideal for all small machine from Tractors to Skid Steers
- Heavy duty box section base for tine mounting
- KV or Hardox tine option for all models

Product code	Tine type	Width mm (ft)	Tine Spacing	Tine Qty
TLF-40KV	KV	1219 (4'0")	220	6
TLF-40HX	Hardox	1219 (4'0")	220	6
TLF-46KV	KV	1371 (4'6")	260	6
TLF-46HX	Hardox	1371 (4'6")	260	6
TLF-50KV	KV	1524 (5'0")	235	7
TLF-50HX	Hardox	1524 (5'0")	235	7
TLF-56KV	KV	1676 (5'6")	220	8
TLF-56HX	Hardox	1676 (5'6")	220	8
TLF-60KV	KV	1828 (6'0")	245	8
TLF-60HX	Hardox	1828 (6'0")	245	8
TLF-66KV	KV	1981 (6'6")	230	9
TLF-66HX	Hardox	1981 (6'6")	230	9
TLF-70KV	KV	2133 (7'0")	250	9
TLF-70HX	Hardox	2133 (7'0")	250	9
TLF-76KV	KV	2286 (7'6")	270	9
TLF-76HX	Hardox	2286 (7'6")	270	9



PRO-AG RANGE

Pro-Ag Muck Fork Range

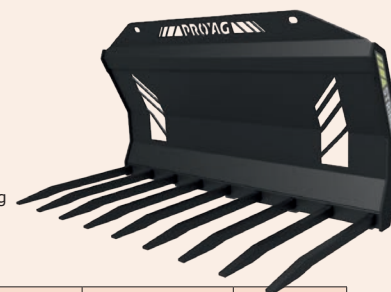
- 6 models in the range from 6ft to 8ft model range
- Standard KV tine fitted into heavy duty base section
- Full back plate with integral spill guard
- Full Back Plate with tine visibility pockets
- All common OEM machine pick ups available



Model	Width mm (ft)	Outer tine offset mm	Tine spacing mm	Tine Qty
MF-60KV	1830 (6'0")	60	280	7
MF-66KV	1980 (6'6")	47.5	265	8
MF-70KV	2130 (7'0")	50	250	9
MF-76KV	2290 (7'6")	45	270	9
MF-80KV	2440 (8'0")	52.5	255	10
MF-86KV	2590 (8'6")	60	270	10

Pro-Ag Contractor Fork Range

- 6 Models in the range from 6ft to 8ft
- Heavy duty design
- Hardox welded tines as standard
- Heavy duty fabricated tine holder
- Heavy duty fork base with wear strip
- High strength tines will resist bending
- 960mm useable tine length

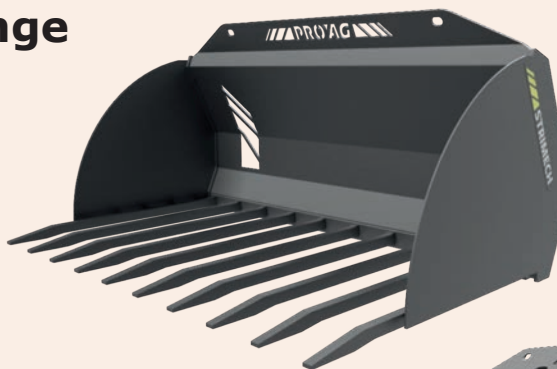


Model	Width mm (ft)	Outer tine offset mm	Tine spacing mm	Tine Qty
CF-60	1830 (6'0")	60	280	7
CF-66	1980 (6'6")	47.5	265	8
CF-70	2130 (7'0")	50	250	9
CF-76	2290 (7'6")	45	270	9
CF-80	2440 (8'0")	52.5	255	10
CF-86	2590 (8'6")	60	270	10

PRO-AG RANGE

Pro-Ag Log Fork Range

- 6 Models in the range from 6ft to 8ft
- Heavy duty design
- Hardox welded tines as standard
- Heavy duty fabricated tine holder
- Heavy duty fork base with wear strip
- High strength tines will resist bending
- Side plates to help retain material
- 1400mm useable tine length



Model	Width mm (ft)	Outer Tine Offset mm	Tine Spacing mm	Tine Qty
LF-60	1830 (6' 0")	60	280	7
LF-66	1980 (6' 6")	47.5	265	8
LF-70	2130 (7' 0")	50	250	9
LF-76	2290 (7' 6")	45	270	9
LF-80	2440 (8' 0")	52.5	255	10
LF-86	2590 (8' 6")	60	270	10

PRO-AG RANGE

Pro-Ag Heavy Duty Log Fork

- Heavy duty design
- Hardox welded tines with additional boron 500 wear tips
- Webbed tines for addition strength
- Bolt on high capacity 12mm thick side plates
- High visibility back plate
- Side plates to help retain material
- 1360mm useable tine length
- Legal for road travel
- Designed for wheeled loaders



Model	Overall Width mm (ft)	Overall Tine Length mm	Useable Tine Length mm	Tine Spacing (Gap)	Tine Qty
HDLF-90	2800 (9')	1600	1360	220	11

PRO-AG RANGE

Pro-Ag High-Capacity Grass Fork

- 20mm Thick Full Length Wear Edge
- Heavy Duty Channel Tine Housing
- 1400mm Long Hardox or Spring Steel Tine option
- Straight Back For Maximum Capacity
- 4 Side Tines (2 each side)
- Integral Spill Guard
- Bolt On Side Extensions Available on request



Model	Width mm (ft)	Height mm (ft)	Depth mm (ft)
GFS8	2440 (8'0")	1350 (4'5")	1450 (4'9")
GFS9	2740 (9'0")	1350 (4'5")	1450 (4'9")
GFS10	3050 (10'0")	1350 (4'5")	1450 (4'9")

Pro-Ag Folding Fork

- Pivot design guards against impact of material build up
- Hydraulic rams minimise degradation of wings from vehicle vibration
- Angled plates on wings and body protect against material build up
- Hardox tines and heat-treated Boron wear plates on contact surfaces for durability
- Custom branding options available
- 3 width size options –12 ft, 14 ft & 16 ft



Model	Open width mm(ft)	Closed width mm (ft)	Height mm (ft)	Weight kg (lb)
PAFF1201	3660 (12'0")	3030 (9'11")	1530 (5')	1555 (3428)
PAFF1401	4200 (14'0")	3030(9'11")	1530 (5')	1697 (3741)
PAFF1601	4900 (16'0")	3030 (9'11")	1530 (5')	1835 (4045)

Pro-Ag Buckrake

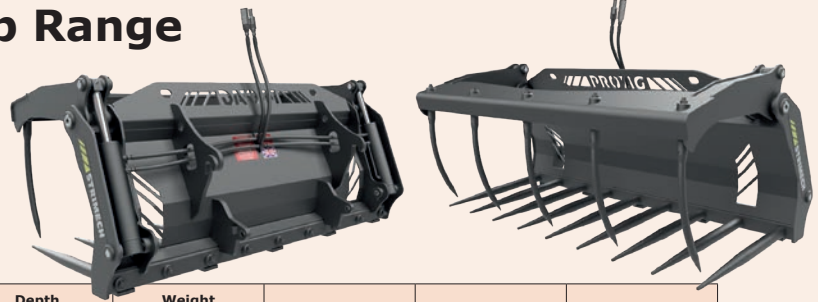
- 1400 long Kverneland Tines
- 1660 long Hardox tines
- 3 Point Linkage Cat 2/3
- Heavy duty push off gate gives good operator visibility
- Flow regulator compensating valve
- Telescopic Handlers/Loading Shovel adaptor brackets available as optional extra

Model	Capacity m ³ (ft ³)	Width mm (ft)	Height mm (ft)	Depth mm (ft)	Weight kg (lb)
BSD8KV	3.46 (122)	2440 (8'0")	1650 (5'5")	1560 (5'1")	1235 (2722)
BSD8HX	4 (141)	2440 (8'0")	1650 (5'5")	1740 (5'8")	1360 (2998)
BSD9KV	4.02 (142)	2740 (9'0")	1650 (5'5")	1560 (5'1")	1308 (2883)
BSD9HX	4.65 (164)	2740 (9'0")	1650 (5'5")	1740 (5'8")	1440 (3174)
BSD10KV	4.5 (159)	3050 (10'0")	1650 (5'5")	1560 (5'1")	1350 (2976)
BSD10HX	5.2 (184)	3050 (10'0")	1650 (5'5")	1740 (5'8")	1500 (3307)
BSD12HX	6.36 (222)	3660 (12'0")	1650 (5'5")	1740 (5'8")	1630 (3593)



Pro-Ag Tractor Loader Grab Range

- Wide opening grab
- Large main pivot pins with main pivot boss nylon bushed
- Heavy duty box section base for tine mounting
- Hydraulic rams strategically placed to prevent material build up
- KV or Hardox tine option for all models



Model	Capacity m ³ (ft ³)	Overall Width mm (ft)	Height mm (ft)	Depth mm (ft)	Weight kg (lb)	Tine Type	Top Tines	Base Tines
TLG-50KV	0.85 (30)	1524 (5'0")	820 (2'8")	820 (2'8")	350 (772)	KV	4 x 680mm	8 x 820mm
TLG-50HX	0.85 (30)	1524 (5'0")	820 (2'8")	820 (2'8")	360 (794)	Hardox	4 x 680mm	8 x 820mm
TLG-56KV	0.9 (32)	1676 (5'6")	820 (2'8")	820 (2'8")	372 (820)	KV	5 x 680mm	8 x 820mm
TLG-56HX	0.9 (32)	1676 (5'6")	820 (2'8")	820 (2'8")	380 (838)	Hardox	5 x 680mm	8 x 820mm
TLG-60KV	0.95 (33)	1828 (6'0")	820 (2'8")	820 (2'8")	395 (871)	KV	5 x 680mm	8 x 820mm
TLG-60HX	0.95 (33)	1828 (6'0")	820 (2'8")	820 (2'8")	410 (904)	Hardox	5 x 680mm	8 x 820mm
TLG-66KV	1.0 (35)	1981 (6'6")	820 (2'8")	820 (2'8")	405 (893)	KV	5 x 680mm	8 x 820mm
TLG-66HX	1.0 (35)	1981 (6'6")	820 (2'8")	820 (2'8")	420 (926)	Hardox	5 x 680mm	8 x 820mm
TLG-70KV	1.05 (37)	2133 (7'0")	820 (2'8")	820 (2'8")	425 (937)	KV	5 x 680mm	8 x 820mm
TLG-70HX	1.05 (37)	2133 (7'0")	820 (2'8")	820 (2'8")	435 (959)	Hardox	5 x 680mm	8 x 820mm
TLG-76KV	1.1 (39)	2286 (7'6")	820 (2'8")	820 (2'8")	468 (1032)	KV	5 x 680mm	8 x 820mm
TLG-76HX	1.1 (39)	2286 (7'6")	820 (2'8")	820 (2'8")	480 (1058)	Hardox	5 x 680mm	8 x 820mm

Pro-Ag Power Grab Range

- Enclosed back and spill guard to ensure the headstock keeps clean
- Ideal for Manure and Silage handling
- Wide opening grab (1.4m)
- Tines positioned for optimal penetration
- Pressed/rolled sections for maximum strength
- New heavy duty design hydraulic rams
- Plated pins
- Available with Hardox or KV tine options

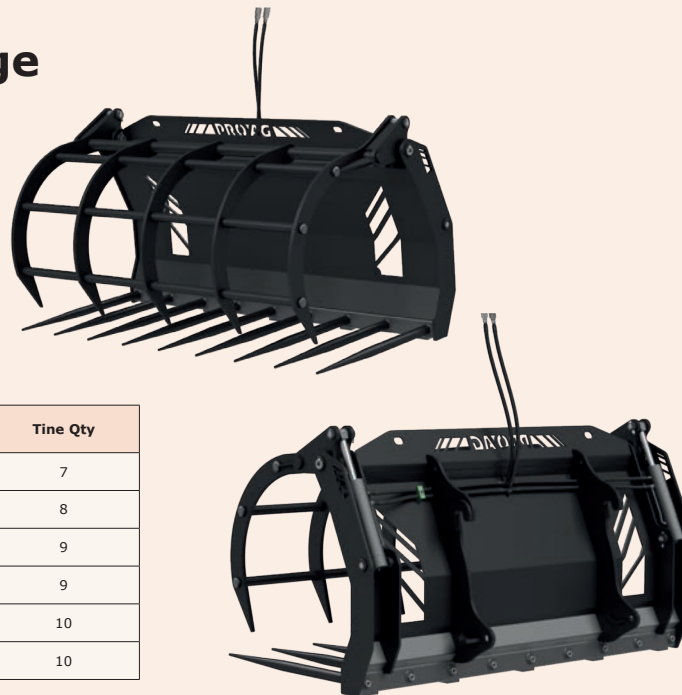


Model	Capacity m ³ (ft ³)	Width mm (ft)	Height mm (ft)	Depth mm (ft)	Weight kg (lb)	Number of base tines	Number of grab tines
PS-66KV	1.5 (53)	1980 (6'6")	1090 (3'7")	1150 (3'9")	598 (1318)	8	5
PS-66HX	1.5 (53)	1980 (6'6")	1090 (3'7")	1150 (3'9")	652 (1437)	8	5
PS-70KV	1.6 (57)	2130 (7'0")	1090 (3'7")	1150 (3'9")	620 (1366)	9	5
PS-70HX	1.6 (57)	2130 (7'0")	1090 (3'7")	1150 (3'9")	670 (1477)	9	5
PS-76KV	1.7 (60)	2290 (7'6")	1090 (3'7")	1150 (3'9")	648 (1429)	9	5
PS-76HX	1.7 (60)	2290 (7'6")	1090 (3'7")	1150 (3'9")	700 (1543)	9	5
PS-80KV	1.8 (63)	2440 (8'0")	1090 (3'7")	1150 (3'9")	675 (1488)	10	5
PS-80 HX	1.8 (63)	2440 (8'0")	1090 (3'7")	1150 (3'9")	723 (1594)	10	5
PS-86 KV	1.9 (67)	2590 (8'6")	1090 (3'7")	1150 (3'9")	720 (1587)	10	5
PS-86 HX	1.9 (67)	2590 (8'6")	1090 (3'7")	1150 (3'9")	770 (1698)	10	5



Pro-Ag Muck Fork & Grab Range

- Full back plate & integral spill guard
- Designed to give maximum strength but still allowing visibility for the operator to see the fork tips
- KV tines fitted as standard set into a heavy-duty base section.
- The grab helps retain the load making this a very versatile tool on all farms

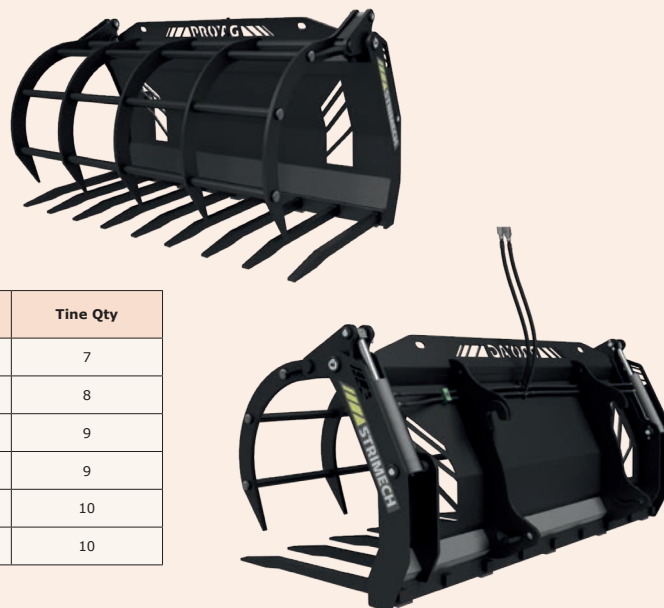


Model	Capacity m ³ (ft ³)	Width m (ft)	Outer tine offset mm	Tine spacing mm	Tine Qty
MFG-60KV	1.5 (53)	1.83 (6'0")	60	280	7
MFG-66KV	1.6 (57)	1.98 (6'6")	47.5	265	8
MFG-70KV	1.7 (60)	2.13 (7'0")	50	250	9
MFG-76KV	1.85 (65)	2.29 (7'6")	45	270	9
MFG-80KV	2 (71)	2.44 (8'0")	52.5	255	10
MFG-86KV	2.1 (74)	2.59 (8'6")	60	270	10

PRO-AG RANGE

Pro-Ag Contractor Fork & Grab Range

- 6 Models in the range
- Heavy duty design
- Hardox welded tines as standard
- Heavy duty fabricated tine holder
- Heavy duty fork base with wear strip
- High strength tines will resist bending



Model	Capacity m ³ (ft ³)	Width m (ft)	Outer tine offset mm	Tine spacing mm	Tine Qty
CFG-60	1.5 (53)	1.83 (6'0")	60	280	7
CFG-66	1.6 (57)	1.98 (6'6")	47.5	265	8
CFG-70	1.7 (60)	2.13 (7'0")	50	250	9
CFG-76	1.85 (65)	2.29 (7'6")	45	270	9
CFG-80	2 (71)	2.44 (8'0")	52.5	255	10
CFG-86	2.1 (74)	2.59 (8'6")	60	270	10

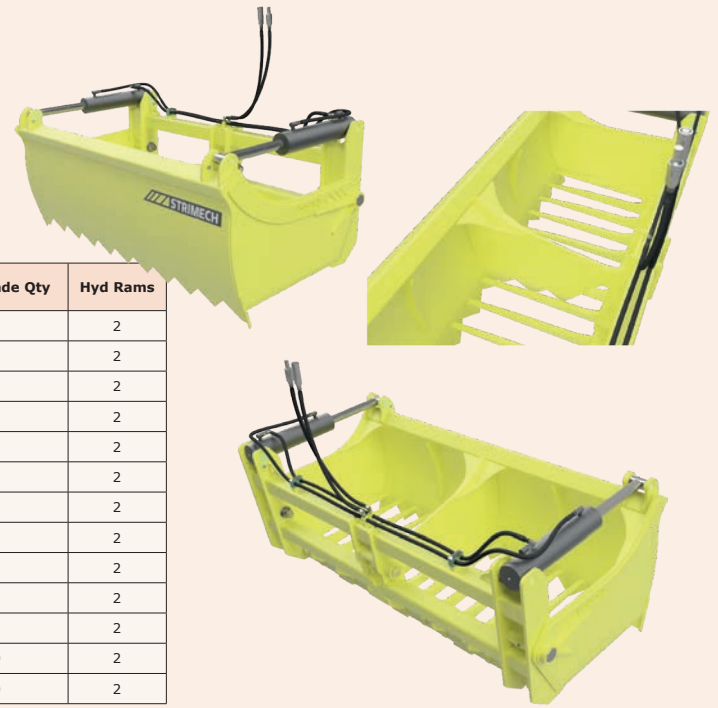
PRO-AG RANGE

Pro-Ag Shear Grab

- All cutting blades are Hardox
- Boron 500 bucket toe plate
- KV or Hardox tine option
- Heavy duty 10mm box section
- All pivot points are fully bushed
- Suitable for all types of feeds whole to precision crop including Maze and grains
- Bolt on bracket system allowing a wide range of machine compatibility
- Latest addition of Centre blade alleviates the need for a third ram

Model	Capacity m ³ (ft ³)	Overall Width mm (ft)	Cutting Width mm (ft)	Tine Qty	Knife Blade Qty	Hyd Rams
SGS14/2KV	0.88 (31)	1400 (4'7")	1300 (4'3")	9	5	2
SGS14/2HX	0.88 (31)	1400 (4'7")	1300 (4'3")	9	5	2
SGS16/2KV	1.03 (36)	1600 (5'2")	1500 (4'10")	10	6	2
SGS16/2HX	1.03 (36)	1600 (5'2")	1500 (4'10")	10	6	2
SGS18/2KV	1.16 (41)	1800 (5'10")	1700 (5'6")	12	7	2
SGS18/2HX	1.16 (41)	1800 (5'10")	1700 (5'6")	12	7	2
SGS20/2KV	1.29 (45)	2000 (6'6")	1900 (6'2")	14	8	2
SGS20/2HX	1.29 (45)	2000 (6'6")	1900 (6'2")	14	8	2
SGCB20/2HX*	1.29 (45)	2000 (6'6")	1900 (6'2")	14	8	2
SGS22/2HX	1.43 (50)	2200 (7'2")	2100 (6'10")	15	9	2
SGCB22/HX*	1.43 (50)	2200 (7'2")	2100 (6'10")	14	9	2
SGS24/2HX	1.57 (55)	2400 (7'10")	2300 (7'6")	16	10	2
SGCB24/HX*	1.57 (55)	2400 (7'10")	2300 (7'6")	16	10	2

* = Centre blade models



PRO-AG RANGE

Pro-Ag Shear Bucket

- All cutting blades are Hardox.
- Boron 500 bucket toe plate
- Heavy duty 10mm box section
- All pivot points are fully bushed
- Suitable for precision crop including Maze and grains
- Bolt on bracket system allowing a wide range of machine compatibility
- Full spare parts back up

Model	Capacity m ³ (ft ³)	Overall Width m (ft)	Cutting Width m (ft)	Knife Blade Qty	Hyd Rams	Weight kg (lb)
SGB18	1.05 (37)	1.8 (5'10")	1.7 (5'6")	7	2	783 (1726)
SGB20	1.17 (42)	2.0 (6'6")	1.9 (6'2")	8	2	837 (1845)
SGB22	1.3 (46)	2.2 (7'2")	2.1 (6'10")	9	2	881 (1942)
SGB24	1.4 (50)	2.4 (7'10")	2.3 (7'6")	10	2	935 (2061)



PRO-AG RANGE

Pro-Ag Box Tipper

- Supplied with adjustable side & top arms
- Supplied with ITA/FEM pallet forks
- Supplied with hydraulic valve block with in-line restrictors to slow rotation speed for safety
- Requires hydraulic service fitted on machine



Model	Capacity kg (lb)	Height m (ft)	Depth m (ft)	Weight kg (lb)
BT2000	2000 (4409)	1.2 (3'11")	1.5 (4'10")	750 (1653)



Pro-Ag Fixed Bag Lifter

- Smooth arm design to prevent damage to bags
- Rear support bar stabilises bags during transport
- Handles both 600kg and 1200kg bags
- Arms centres 1030mm wide as standard build
- All models are complete with brackets



Model	Capacity (kg)	Width m (ft)	Height m (ft)	Depth m (ft)	Weight kg (lb)
FBL-01	2 x 1200kg/4 x 600kg	1.56 (5'1")	1.14 (3'9")	1.57 (5'1")	200 (440)

Pro-Ag Hydraulic Bag Lifter

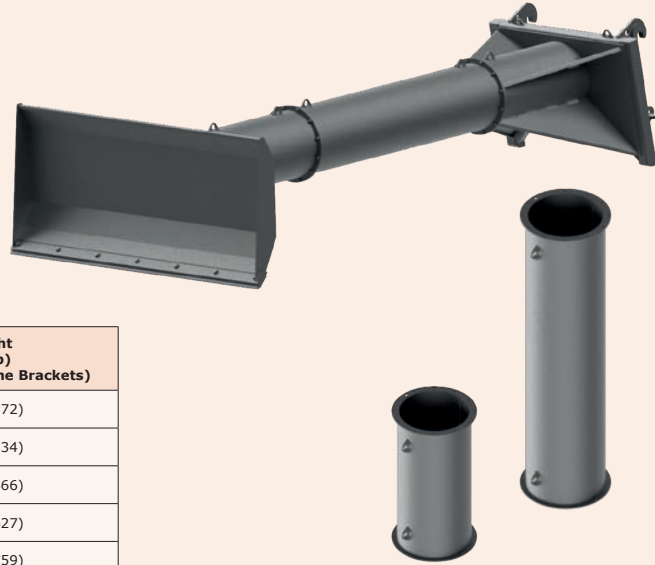
- Smooth arm design to prevent damage to bags
- Rear support bar stabilises bags during transport
- Handles both 600kg and 1200kg bags
- All models are supplied with brackets/hoses and 3/8 male/female flat face couplers



Model	Capacity (kg)	Width m (ft)	Height m (ft)	Depth m (ft)	Weight kg (lb)
HBL-01	2 x 1200kg/4 x 600kg	1.81 (5'11")	1.1 (3'8")	1.6 (5'2")	320 (705)

Pro-Ag Grain Pusher

- Modular design enabling simple to extend or reduce the length on site
- Heavy duty design
- Ideal for Telescopic Handlers, Backhoe Loaders and Loading Shovels with several machine pick-ups
- No grain trap points on frame
- Rubber wear edge for perfect floor protection
- Tube extensions in 1 and 2 metre lengths



Model	Length m (ft) (without machine Brackets)	Width m (ft)	Weight kg (lb) (without machine Brackets)
MGP76-2	1.95 (6'4")	2.35 (7'7")	532 (1172)
MGP76-3	2.95 (9'7")	2.35 (7'7")	605 (1334)
MGP76-4	3.95 (13'0")	2.35 (7'7")	665 (1466)
MGP76-5	4.95 (16'2")	2.35 (7'7")	738 (1627)
MGP76-6	5.95 (19'6")	2.35 (7'7")	798 (1759)
MGP76-7	6.95 (22'9")	2.35 (7'7")	880 (1940)

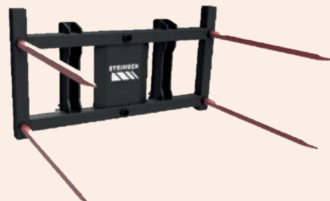
Pro-Ag Bale Handling

Pro-Ag Bale Spike



Model	Capacity	Overall Width mm (ft)	Height mm (ft)	Depth mm (ft)	Weight kg (lb)
RBS-01	1 Bale	900 (2'11")	580 (1'10")	1100 (3'7")	70 (154)

Pro-Ag Heavy Duty Twin Bale Spike



Model	Capacity	Overall Width mm (ft)	Height mm (ft)	Depth mm (ft)	Weight kg (lb)
TBS-01	2 Bales	1400 (4'7")	580 (1'10")	1100 (3'7")	97 (214)

Pro-Ag Heavy Duty Bale Spike with Detachable Top Frame



Model	Capacity	Overall Width mm (ft)	Height mm (ft)	Depth mm (ft)	Weight kg (lb)
BFD-01	3 Bales	1400 (4'7")	1715 (5'7")	1100 (3'7")	350 (772)

Pro-Ag Folding Bale Fork Tines and Load Guard



Model	Capacity	Overall Width mm (ft)	Max Height mm (ft)	Base Tine mm (ft)	Centre Tine mm (ft)
FBS-01	3 Bales	1910 (6'3")	2220 (7,3")	1100 (3'7")	800 (2'8")
FBS-02	2 Bales	1910 (6'3")	2220 (7,3")	1100 (3'7")	800 (2'8")
FBS-03	1 Bale	1910 (6'3")	1375 (4'6")	1100 (3'7")	800 (2'8")

Pro-Ag Square Wrapped Bale Handler



Model	Capacity kg (lb)	Min Length mm (ft)	Max Length mm (ft)	Height mm (ft)	Weight kg (lb)
SWB-01	1100 (2425)	1360 (4'5")	1810 (6'0")	1020 (3'4")	240 (529)

Pro-Ag Universal Bale Grab



Model	Capacity kg (lb)	Open Dims mm (ft)	Closed Dims mm (ft)	Weight kg (lb)
UGB-01	1200 (2645)	1950 (6'4")	730 (2'4")	650 (1433)

Pro-Ag Bale Handling

Pro-Ag Wrapped Bale Stacker

Model	Width mm (ft)	Height mm (ft)	Depth mm (ft)	Weight kg (lb)	Maximum closing mm (ft)	Maximum opening mm (ft)
WSB-01	1500 (4'11")	660 (2'2")	1100 (3'7")	280 (616)	900 (3'0")	1800 (5'10")



Pro-Ag Wrapped Bale Handler

Model	Width mm (ft)	Height mm (ft)	Depth mm (ft)	Weight kg (lb)	Maximum closing mm (ft)	Maximum opening mm (ft)
WBH-01	1500 (4'11")	800 (2'7")	1400 (4'7")	220 (484)	900 (3'0")	1800 (5'10")



Pro-Ag Square Bale Clamp

Model	Maximum closing mm (ft)	Maximum opening mm (ft)	Maximum capacity kg (lb)
SBC-01	800 (2'7")	2100 (6'10")	1000 (2204)



Pro-Ag Log Grabs

- 3 Model Range, standard, medium and Heavy Duty
- Single and twin ram designs
- Maximum log sizes 850mm, 1200mm & 1500mm covered
- Ideal for Telescopic Handlers, Backhoe Loaders and Loading Shovels
- Quick Hitch Direct mounted versions available for most machine manufacturers



Model	SWL kg (lb)	Max Opening Height High Pin mm (ft)	Max Opening Height Low Pin mm (lb)	Maximum Log Diameter mm (ft)	Overall Width mm (ft)	Weight kg (lb) (No Fixings)
SDLG	1500 (3307)	1355 (4'5")	813 (2'10")	850 (2'9")	1120 (3'8")	285 (628)
MDLG	3000 (6614)	2341 (7'8")	1663 (5'3")	1200 3'11")	1220 (4'0")	752 (1658)
HDLG	6000 (13228)	2407 (7'10")	1768 (5'9")	1500 (5'0")	1550 (5'1")	1100 (2425)

PROBUILD

Comprehensive range of attachments designed specifically for the construction community, including buckets, work Platforms and fork positioners.



Pro-Build Bagezee

- One person operation
- Machine capacity 2 Tonne minimum
- Compatible with Telehandlers and Wheeled Loaders
- Larger sizes available on request
- Supplied with Bolt on Wear Edge as standard
- Sleeved bag arms available as an optional extra

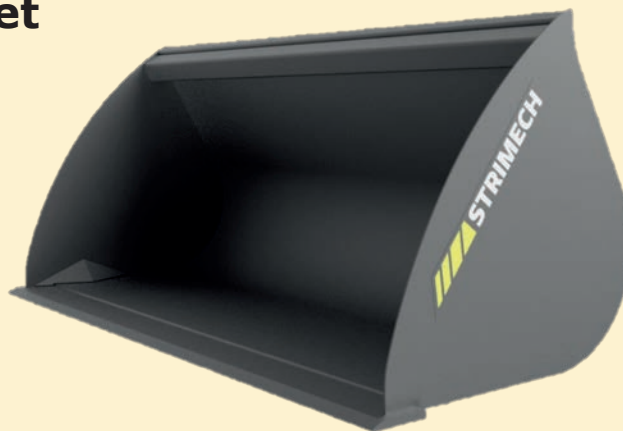


Model	Capacity m ³ (ft ³)	Overall Width mm (ft)	Height mm (ft)	Depth mm (ft)	Weight kg (lb)
BE0.5	0.5 (17)	1360 (4'4")	610 (2'0")	1100 (3'7")	354 (780)
BE0.6	0.6 (21)	1430 (4'8")	670 (2'2")	1200 (3'11")	420 (925)
BE0.8	0.8 (28)	1540 (5'0")	800 (2'7")	1350 (4'5")	505 (1113)
BE1.0	1.0 (35)	1600 (5'2")	900 (2'11")	1450 (4'9")	555 (1223)

PRO-BUILD RANGE

Pro-Build Construction GP Bucket

- Boron 500 leading edge
- 5mm Corner Fills offering greater strength
- Rolled shell giving greater versatility for dump & roll back
- 5mm thick shell
- Bolt on Wear Edge available as an optional extra



Model	Capacity m ³ (ft ³)	Overall Width mm (ft)	Height mm (ft)	Depth mm (ft)
CB10-50	0.5 (17)	1524 (5'0")	915 (3'0")	915 (3'0")
CB10-56	0.6 (21)	1680 (5'6")	915 (3'0")	915 (3'0")
CB10-60	0.7 (25)	1830 (6'0")	915 (3'0")	915 (3'0")
CB10-66	0.8 (28)	1980 (6'6")	915 (3'0")	915 (3'0")
CB10-70	0.9 (32)	2130 (7'0")	915 (3'0")	915 (3'0")
CB10-76	1.0 (35)	2290 (7'6")	915 (3'0")	915 (3'0")
CB10-80	1.1 (39)	2440 (8'0")	915 (3'0")	915 (3'0")

PRO-BUILD RANGE

Pro-Build Heavy Duty Rehandling Bucket

- Machine Capacity 2 – 4.5 tonnes
- Bolt-on-Toe Plate fitted as standard
- One Piece 8mm thick rolled back shell
- Reinforcing wear strips on shell base joining the hanger brackets for added strength
- Option to substitute Bolt-on-Toe Plate for Digging Teeth
- Optional extra Spill Guard

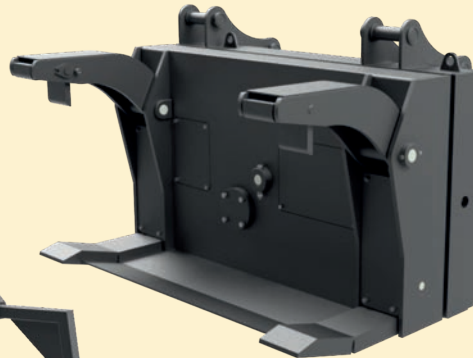
Model	Capacity m ³ (ft ³)	Overall Width m (ft)	Height m (ft)	Depth m (ft)	Weight kg (lb)
RB08-70	0.88 (31)	2.13 (7'0")	755 (2'5")	875 (2'10)	400 (882)
RB14-70	1.38	2.13 (7'0")	925 (3'0")	1.1 (3'7")	450 (992)
RB10-76	1 (35)	2.29 (7'6")	875 (2'10)	875 (2'10)	610 (1344)
RB15-76	1.5 (53)	2.29 (7'6")	925 (3'0")	1.1 (3'7")	660 (1455)
RB17-76	1.72 (60)	2.29 (7'6")	1000 (3'3")	1.2 (3'11)	848 (1869)
RB21-76	2.08 (74)	2.29 (7'6")	1080 (3'6")	1.2 (3'11)	864 (1904)
RB10-80	1.1 (39)	2.44 (8'0")	755 (2'5")	875 (2'10)	660 (1455)
RB16-80	1.6 (57)	2.44 (8'0")	925 (3'0")	1.1 (3'7")	710 (1565)
RB18-80	1.85 (65)	2.44 (8'0")	1000 (3'3")	1.2 (3'11)	898 (1980)
RB22-80	2.2 (78)	2.44 (8'0")	1080 (3'6")	1.3 (4'3")	914 (2015)



PRO-BUILD RANGE

Pro-Build Pole Planter

- Handles poles 150mm to 500mm diameter
- Approved by electricity supply companies
- Requires hydraulic service feed and return
- Requires 12-volt electrical supply
- Direct or quick hitch mounting
- Heavy duty design
- Machine mounted Pole Support Frame as optional extra
- Integral side roller optional extra
- Full spare parts back up



Model	Capacity kg (lb)	Pole Diameter mm	Weight kg (lb)
PH2500	2500 (5511)	150-500	1150 (2535)



PRO-BUILD RANGE

Pro-Build Snow Plough

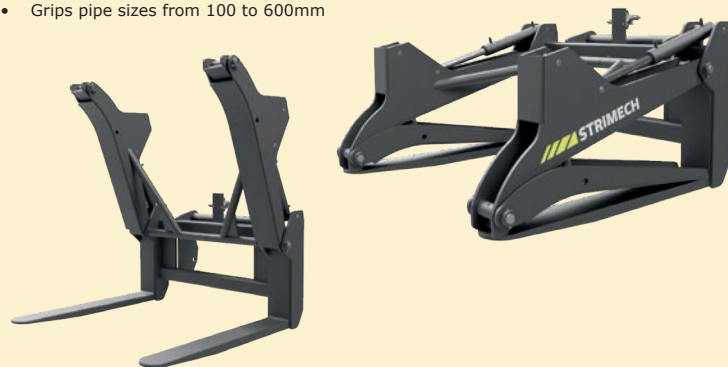
- Manual or Hydraulic models
- Rubber blade leaving a good clear surface
- Left & right-hand angle capability up to 25 degrees
- Can be ordered to fit most machines quick Hitches
- 2.5m wide and 2.29m when angled
- Single jockey wheel fitted as standard and can be fitted to either left- or right-hand side as required
- Option to order with two jockey wheels fitted



Model	Operation Type	Overall Width mm (ft) at 0-degree angle	Overall Width mm (ft) at 25-degree angle	Height mm (ft)	Depth mm (ft)	Weight kg (lb)
SPM80	Manual	2500 (8'2")	2290 (7'6")	800 (2'7")	500 (1'7")	440 (970)
SPH80	Hydraulic	2500 (8'2")	2290 (7'6")	800 (2'7")	500 (1'7")	455 (1003)

Pro-Build Pipe Clamp

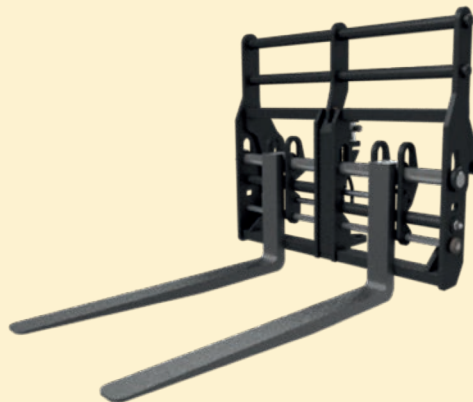
- Grips and carry pipes safely across site
- Grips pipe sizes from 100 to 600mm



Model	SWL kg (lb)	Minimum Pipe Dia mm (inch)	Maximum Pipe Dia mm (inch)	Overall Height mm (ft)	Overall Width mm (ft)	Weight (no fixings) kg (lb)
PG100	4000 (8818)	100 (4")	600 (24")	920 (3'1")	1530 (5'2")	285 (628)

Pro-Build Hydraulic Fork Positioner

- Change pallet fork position from cab
- Both forks operate hydraulically
- Increased operator safety
- Reduces cycle times
- Can use existing round bar type forks
- Supplied with Round bar as standard to suit machine size
- Load maintained central to boom
- Helps reduce damage to materials and pallets
- Pallet forks at extra cost
- Wider 1.5m carriage available
- Option of dual ZM2/ZM3 available for Merlo machines



Model (without Forks)	Capacity kg (lb)	Open width 100mm Fork centre (mm/ft)	Closed width 100mm Fork centre (mm (inch)
DFFP35	3500 (7716)	1075 (3'6")	210 (8")
DFFP40	4000 (8818)	1075 (3'6")	210 (8")
DFFP50	5000 (11023)	1075 (3'6")	210 (8")

Model (including Forks)	Capacity kg (lb)	Open width 100mm Fork centre (mm/ft)	Closed width 100mm Fork centre (mm (inch)
DFFP35/PF	3500 (7716)	1075 (3'6")	210 (8")
DFFP40/PF	4000 (8818)	1075 (3'6")	210 (8")
DFFP50/PF	5000 (11023)	1075 (3'6")	210 (8")

Pro-Build Work Platforms

- Fork section max 150mm x 50mm at 525mm centres
- Kicker Plate all around
- Self-draining chequer plate floor
- Hooks for safety harness
- Two-man model (DWP-01) & Three-man model (TWP-01)
- Internal Tool Tray available as an optional extra



Model	Product Description	Capacity kg (lb)	Height mm (ft)	Depth mm (ft)	Overall Width mm (ft)	Weight kg (lb)
DWP-01FM	Two Person- Fork Mount	500 (1102)	1265 (4'2")	935 (3'0")	1830 (6'0")	250 (551)
DWP-01CM	Two Person- Carriage Mount	500 (1102)	1265 (4'2")	935 (3'0")	1830 (6'0")	290 (639)
TWP-01FM	Three Person- Fork Mount	750 (1653)	1265 (4'2")	935 (3'0")	2270 (7'5")	275 (606)
TWP-01CM	Three Person-Carriage Mount	750 (1653)	1265 (4'2")	935 (3'0")	2270 (7'5")	305 (672)

Pro-Build Tipping Skip

- The base has either a 4-way entry or 2-way entry
- Tip handle, self-return and automatic reset mechanism
- Hopper Body 3mm-plate steel, reinforced with an angle top
- Heavy Duty easy action handle complete with safety catch
- Fitted with heavy-duty safety chain



Model	Capacity	Height	Width	Length	Weight	SWL
TS1250	1250 Litres	1110mm	1320mm	1770mm	245kg	2000kg

Pro Build Auto Locking Tipping Skip

- Reinforced entry sleeves
- Hopper Body 3mm-plate steel, reinforced with an angle top
- Strut guard
- Auto locks on to pallet forks on lifting
- Strength to withstand site conditions



Model	Capacity	Height	Width	Length	Weight	SWL
ALS1250	1250 Litres	960mm	1320mm	1900mm	205kg	2000kg

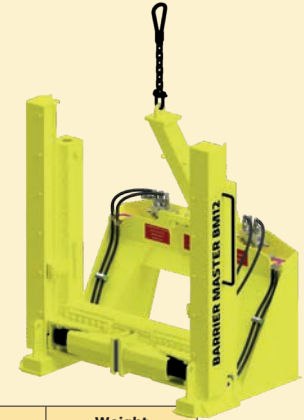
Pro-Build Fence Master

- Extracts posts with heavy concrete footings in under 2 minutes
- No digging required – saves hours of backbreaking time and work
- 4000kg pulling force
- Extracts footings with up to 600mm diameter
- Removes broken or rotten posts easily with the special claw attachment
- Allows for the complete post and footing to be wheeled away
- Self-contained and operated by a hand pump
- Removing posts of all shapes and sizes including fence posts, street signs, gateposts & sports ground football posts



Pro-Build Barrier Master

- Operated entirely from the safety of the driver's cab (or remote control for lorry mounted crane model)
- Proven to be up to 10 times faster, and safer, than conventional methods
- Pulling force is directed into the ground with no danger of ejected parts

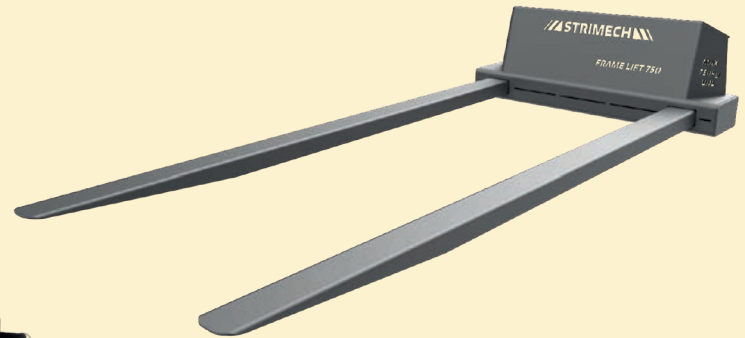


Model	Width mm (ft)	Pulling force	Weight kg (lb)
BM10	1630 (6'4")	10 tonnes	707 (1558)
BM12	1630 (6'4")	15 tonnes	949 (2292)
BM15	2040 (7'4")	15 tonnes	1302 (2870)

PRO-BUILD RANGE

Pro-Build Frame Lift 750

- Designed to Handle prefabricated building panels without casing any damage
- Fabricated steel box designed to prevent any twist
- Suitable for standard 100x50 Forks
- Fork retaining pins for easy attachment to machine
- Max load rating 750kg



Model	Max Width mm (ft)	Fixed Fork width centres mm (ft)	Usable Fork Length mm (ft)	Fork Pocket Width mm	Fork Pocket Height mm	SWL kg (lb)	Weight kg (lb)
FL 750	1316 (4'3")	1000 (3'3")	2504 (8'2")	116	59	750 (1653)	190 (418)

PRO-BUILD RANGE

PROWASTE

Comprehensive range of attachments designed for the waste & recycling community, including buckets, bucket & grabs and forks.



Pro-Waste Wastemaster Fork

- 6 Models in the range from
- Heavy duty design
- Hardox welded tines as standard
- Heavy duty fabricated tine holder
- Heavy duty fork base with wear strip
- High strength tines will resist bending

Model	Width mm (ft)	Outer Tine Offset mm	Tine Spacing mm	Tine Quantity
WMF-60	1830 (6' 0")	60	280	7
WMF-66	1980 (6' 6")	47.5	265	8
WMF-70	2130 (7' 0")	50	250	9
WMF-76	2290 (7' 6")	45	270	9
WMF-80	2440 (8' 0")	52.5	255	10
WMF-86	2590 (8' 6")	60	270	10



Pro-Waste Wastemaster Fork & Grab Range

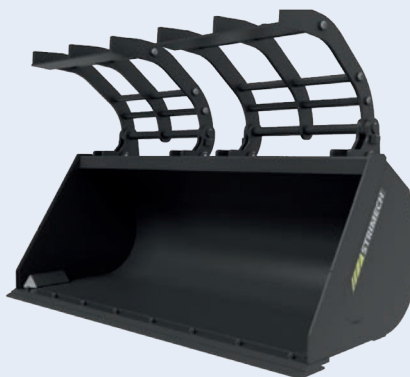
- 6 Models in the range
- Heavy duty design
- Hardox welded tines as standard
- Heavy duty fabricated tine holder
- Heavy duty fork base with wear strip
- High strength tines will resist bending



Model	Capacity m ³ (ft ³)	Width m (ft)	Outer tine offset mm	Tine spacing mm	Tine Quantity
WMFG-60	1.5 (53)	1.83 (6'0")	60	280	7
WMFG-66	1.6 (57)	1.98 (6'6")	47.5	265	8
WMFG-70	1.7 (60)	2.13 (7'0")	50	250	9
WMFG-76	1.85 (65)	2.29 (7'6")	45	270	9
WMFG-80	2 (71)	2.44 (8'0")	52.5	255	10
WMFG-86	2.1 (74)	2.59 (8'6")	60	270	10

Pro-Waste Wastemaster Bucket and Claw

- Machine capacity 3-6 tonnes
- Heavy duty design
- Supplied with reversible bolt on wear edge as standard
- Supplied with either one piece or split grabs
- Hydraulic supply required on machine



Model	Capacity m ³ (ft ³)	Overall Width mm (ft)	Height m (ft)	Depth m (ft)	Weight kg (lb)
WMB15-76	1.5 (53)	2290 (7'6")	1070 (3'6")	1260 (4'1")	1175 (2590)
WMB16-80	1.6 (57)	2440 (8'0")	1070 (3'6")	1260 (4'1")	1250 (2755)
WMB20-76	2.0 (71)	2290 (7'6")	1180 (3'10")	1290 (4'2")	1370 (3020)
WMB17-86	1.7 (60)	2590 (8'6")	1070 (3'6")	1260 (4'1")	1325 (2921)
WMB22-80	2.25 (79)	2440 (8'0")	1180 (3'10")	1290 (4'2")	1430 (3152)
WMB25-86	2.5 (88)	2590 (8'6")	1180 (3'10")	1290 (4'2")	1490 (3284)

Pro-Waste Rehandling Bucket and Claw

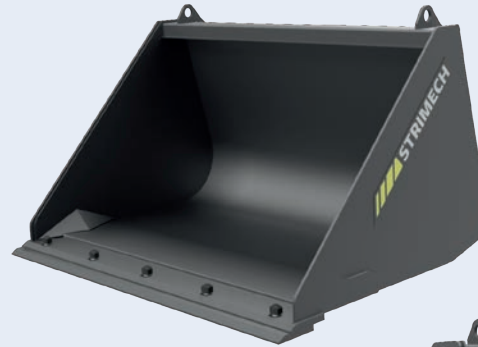
- Ideal for Teletruk machines
- One piece claw
- ITA 2 & ITA 3 machine fixings
- Supplied with reversible bolt on wear edge as standard



Model	Capacity m ³ (ft ³)	Width mm (ft)	Height mm (ft)	Depth mm (ft)
BCTT05	0.5 (17)	1350 (4'5")	850 (2'9")	900 (3'0")
BCTT06	0.6 (21)	1450 (4'9")	850 (2'9")	900 (3'0")

Pro-Waste Rehandling Bucket

- Ideal for Teletruk machines
- General purpose bucket
- ITA 2 & ITA 3 machine fixings
- Supplied with reversible bolt on wear edge as standard



Model	Capacity m ³ (ft ³)	Width mm (ft)	Height mm (ft)	Depth mm (ft)
RBTT05	0.5 (17)	1350 (4'5")	850 (2'9")	900 (3'0")
RBTT06	0.6 (21)	1450 (4'9")	850 (2'9")	900 (3'0")

Pro-Waste Heavy Duty GP Shovels

- 8mm shell thickness
- 10mmsides thickness
- 15 cheek plates thickness
- 8mm thick HD corner fills
- 250mm x 25mm thick weld-in toe plate
- 250mm x 25mm thick 3-piece reversible bolt-on-toe Plate
- 15mm thick and 20mm thick Hardox wear pads on shell base
- 30mm thick machine pick-up brackets

Model	Product Description	Capacity m ³ (ft ³)	Overall Width mm (ft)
GPB15-76	7ft 6 1.5m2 HD GP Shovel	1.5 (53)	2286 (7' 6")
GPB20-80	8ft 2.0m2 HD GP Shovel	2.0 (70)	2438 (8'0")
GPB25-80	8ft 2.5m2 HD GP Shovel	2.5 (88)	2438 (8'0")
GPB25-86	8ft 6 2.8m2 HD GP Shovel	2.8 (99)	2590 (8' 6")
GPB30-80	8ft 3.1m2 HD GP Shovel	3.1 (109)	2438 (8'0")
GPB30-86	8ft 6 3.3m2 HD GP Shovel	3.3 (116)	2590 (8' 6")
GPB30-90	9ft 3.5m2 HD GP Shovel	3.5 (124)	2743 (9'0")
GPB40-90	9ft 4.0m2 HD GP Shovel	4 (141)	2743 (9'0")
GPB50-90	9ft 5.0m2 HD GP Shovel	5 (177)	2743 (9'0")



PRO-WASTE RANGE

Pro-Waste Heavy Duty High Tip Shovels

- 11 models in the range from 2m³ to 6m³
- Reversible Boron Bolt-on-toe plate as a single or 3 piece
- Hardox Shell option
- Full or Tubular spill guard as an option

Model	Capacity m ³ (ft ³)	Overall Width ft (mm)
HT20-80	2.0 (70)	2438 (8'0")
HT25-80	2.5 (88)	2438 (8'0")
HT25-86	2.8 (99)	2590 (8'6")
HT30-90	3.0 (106)	2743 (9'0")
HT30-96	3.3 (116)	2895 (9'6")
HT35-96	3.5 (123)	2895 (9'6")
HT40-86	4.0 (141)	2590 (8'6")
HT45-90	4.5 (159)	2743 (9'0")
HT50-10	5.0 (176)	3050 (10'0")
HT55-96	5.5 (194)	2895 (9'6")
HT60-10	6.0 (212)	3050 (10'0")



PRO-WASTE RANGE

Large Multi-Bucket Bucket Grapple

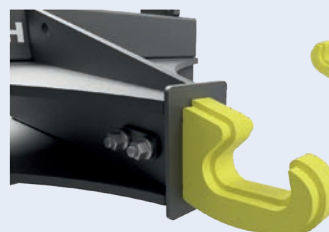
- 2 Models in the range
- Overall widths from 8'6" & 9'0"
- Wide opening top grab
- Removable side plates
- Hardox grab tines
- Reversible Bolt on Toe Plate fitted as standard

Model	Capacity m ³ (ft ³)	Overall Width mm (ft)	Height mm (ft)	Depth mm (ft)	Weight kg (lb)
MG25-86	2.6 (92)	2590 (8'6")	1400 (4'7")	1500 (5'0")	1504 (3316)
MG25-90	2.7 (95)	2800 (9'0")	1400 (4'7")	1500 (5'0")	1590 (3505)



Pro-Waste Skip Hook

- Commonly used in green waste and recycling industries
- For a speedy and safe way of moving empty 'roll on-roll off' skips
- elongated hook to allow turning of the skip without pinching or causing damage
- All common machine quick hitch pick ups
- Heavy duty design
- Only to be used to manoeuvre empty skips



Model	Overall Width mm (ft)	Height mm (ft)	Depth mm (ft)	Weight kg (lb)
SH-01	1200 (3'11")	900 (2'11")	1200 (3'11")	220 (485)

Pro-Waste Knife Arms Clamp

- Machine capacity up to 6 tonnes
- Suitable for the waste recycling industry
- Handles bales of paper, plastic, bricks and fridges
- Ability for close stacking of bales
- Heavy duty design
- Hydraulic supply required on machine
- Rubber Gripper Pads as an optional extra



Model	Capacity kg (lb)	Max opening mm (ft)	Max closing mm (ft)	Arm Height mm (ft)	Arm Depth mm (ft)	Weight kg (lb)
BCP01	2000 (4409)	1800 (5'10")	800 (2'7")	920 (3'1")	1170 (3'10")	785 (1730)

Machine Bolt-on-Brackets and Spare Parts

Strimech offers a great back up service with serviceable spares as well as weld-on & Bolt-on machine brackets covering all the common OEM pickup offerings.



STRIMECH
Attachments

Approximate Material Weights

Material	kg/m ³	Fill %
Apples	525	85
Ashes	604	85
Barley	600	85
Beet pulp (nuts)	604	100
Beet pulp (pressed)	906	110
Brewer's grain	1110	85
Brick aggregate	1828	100
Carrots Refuse (town)	636	100
Cement (natural)	318	100
Cement (Portland)	1047	100
Chalk	1550	100
Clay (fire)	1890	110
Clay (wet)	238	110
Coal (anthracite)	1046	100
Coal (bituminous)	765	100
Coke (loose)	570	85

Material	kg/m ³	Fill %
Earth (dry)	1150	100
Fertilizer (mixed)	1030	85
Flour	445	85
Gravel (dry)	1650	85
Hay (normal density bale)	190	110
Lime (quick)	881	100
Limestone (crushed)	1530	100
Manure (farmyard)	922	85
Nitrate fertilizer	1250	85
Oats	415	85
Onions	556	85
Peat (dry)	400	100
Petroleum coke	680	85
Potatoes	699	85
Rubble	874	100
Sand (dry)	1440	100

Material	kg/m ³	Fill %
Sand (wet)	795	100
Sawdust	2080	100
Silage (ensile)	1680	110
Silage (green)	349	110
Slurry	1780	85
Snow (fresh)	200	110
Snow (wet)	400	110
Sodium chloride (dry salt)	1300	86
Straw (high density bale)	254	110
Sugar beet	530	110
Turnips	540	100
Wheat	730	85

Conversion Tables
 Kilogramme = 2.2 pounds. Metric Tonne = 0.984
 25.4mm = 1". Metre = 1.094 Yards
 4.546 litres = 1 Gallon. Cubic Metre = 35.2 Cu Ft
(These figures are only as a guide and may vary)

Terms & Conditions of Sale

PRICES

All prices are exclusive of VAT and supplied at price applied for at date of order, all previous price lists are cancelled. All equipment are supplied with machine brackets unless stated.

PAYMENT

All account invoices should be settled in full 30 days from invoice.

ORDERS

All purchase orders must be confirmed by email and specify part number, price and machine pick up type.

SPECIFICATIONS

All capacities, sizes and weights shown are approximate, Strimech reserves the right to change the specification without notice.

DELIVERY

Strimech does not accept any liability for any delivery delays or consequential loss.

ORDER CANCELLATION

Cancellations can only be authorised by the Strimech Sales Team,

conformation by email is also required. A charge will be made to cover the cost of work already completed prior to cancellation.

RETURNS

Returned goods will not be accepted without prior written agreement by Strimech. Returned goods are subject to a handling charge of 25% of their nett value plus the cost of outward and return carriage.

WARRANTY

All new equipment is warranted for a period of 12 months from date of invoice, our warranty does not apply to wear parts.

TITLE

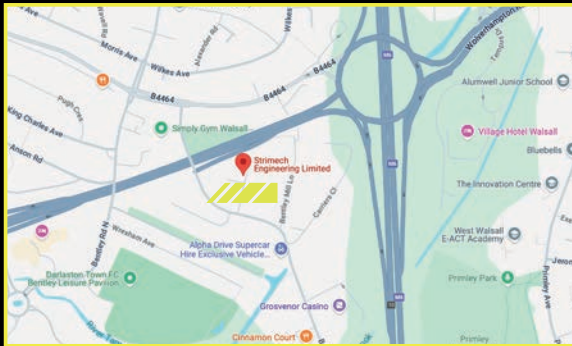
All equipment shall remain the property of Strimech until the customer has paid the contract price in full. While the goods remain in the ownership of Strimech, the customer must insure them against damage, theft or destruction for the contract value. Equipment will be returned to Strimech on demand at the customer's expense. Proceeds of any insurance claim in connection with the equipment will belong to Strimech. This is an excerpt from the terms and conditions of sale, a full copy is available from the sales office.



Notes



STRIMECH *Attachments*



How to find us

Leave the M6 at Junction 10 taking the A454, Black Country Route towards Wolverhampton. Take the first exit signposted Bentley. Turn left into Bentley Mill Way and then first left into Longmore Avenue.



Sales Contacts

Paul Hayward

SALES & PRODUCTION MANAGER

E: paul.hayward@strimech.co.uk

M: 07855 407341



Dave Allen

SALES & MARKETING MANAGER

E: dave.allen@strimech.co.uk

M: 07426 783052

